

TABØR

smd pre-soldered build guide v1.1



Hi fellow!
 Just a quick intro before starting,

Materials to have near you:

1. Soldering Iron - better with temperature control
2. Solder wire
3. A pair of tweezers
4. Multimeter
5. Cutter
6. Solder sucker / wick (optional)
7. Silicone soldering mat (optional)
8. Helping hands (optional)
9. Flux (optional)

If you want to refresh yourself a bit about soldering stuff you can watch [this video](#)¹ by GreatScott!

Another tool that can help you finding the components on the boards is the interactive BOM linked here:

tinyurl.com/taborsmdbom

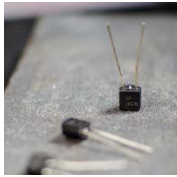
Download it and open the .html file with a browser. You can use it to check where a component is located on the board. Works also offline.



¹ <https://www.youtube.com/watch?v=VxMV6wGS3NY>

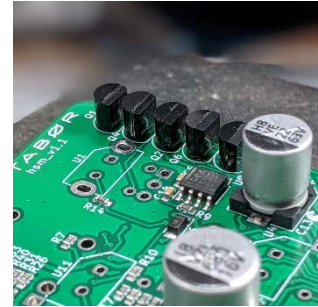
now let's begin starting from the bottom layer
(the side where TABØR is written in the upper right corner)

transistors:



Remove the middle leg of the transistors (pin 2: the base).
tip: you can gently move it back and forth until it breaks, or you can cut it - the shortest possible - with the cutter.
The "D" shape white symbol on the PCB needs to be aligned with the "D" shape of the transistor's body.

5	Q1, Q2, Q4, Q6, Q7	BC337
---	--------------------	-------



trimmer:

This trimmer regulates the NM output level. Any value around 20k - 50k will do.

1	NM1	20k
---	-----	-----

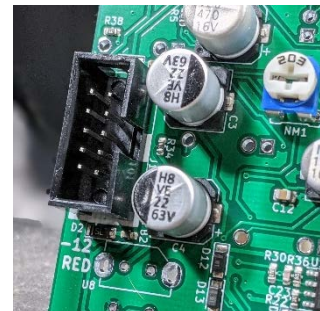


eurorack power socket:

Place the socket matching the drawing on the PCB. Be careful with the notch direction.

tip: solder one pin and check. If the socket is aligned with the PCB solder all the other pins.

1	J101	EURORACK_HEADER
---	------	-----------------



vactrols:

Match the short leg of the vactrol with the squared solder pad on the PCB.

tip: it's easier to bend at 90° degree all the four legs before trying to fit the vactrol in place.

9	U1, U2, U3, U4, U5, U6, U7, U8, U11	VTL5C1
---	-------------------------------------	--------



now flip the board (front layer):

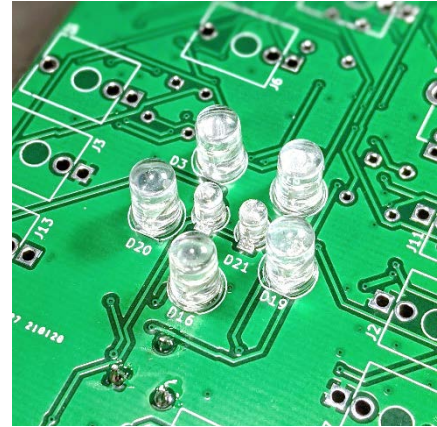
LEDs:

Short leg goes into the square pin (bottom).

Remember that Y stays for yellow LEDs, R for red, G for green and B for blue

tip: the closer to the PCB, the more they will be diffused on the panel's hollow window.

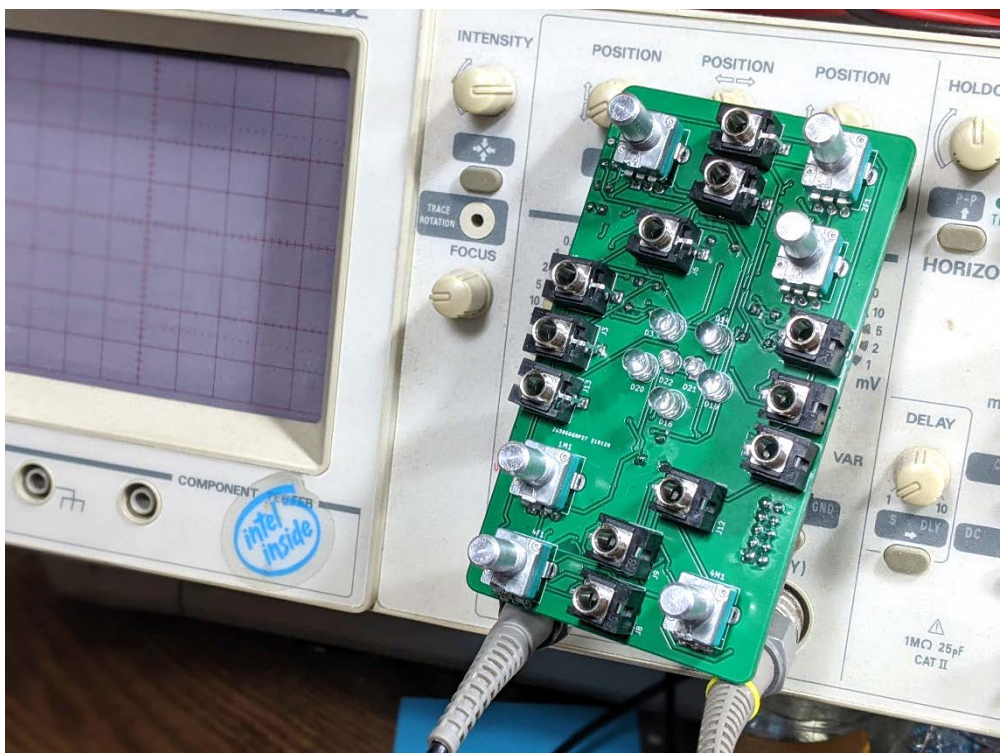
1	D21	Y_3mm
1	D22	R_3mm
1	D16	G_5mm
1	D14	Y_5mm
1	D3	R_5mm
2	D19, D20	B_5mm



surface components:

Wait to solder them: just place all of them in the right place and move to the next step.

4	1F1, 2F1, 2M1, 1M1	50k (6.35mm round shaft)
2	4F1, 4M1	10k (6.35mm round shaft)
12	J2, J3, J4, J5, J6, J7, J8, J9, J10, J11, J12, J13	PJ398SM aka "Thonkiconn"



At last, put the panel on - check its direction - tighten the nuts.

Then solder all the surface components.

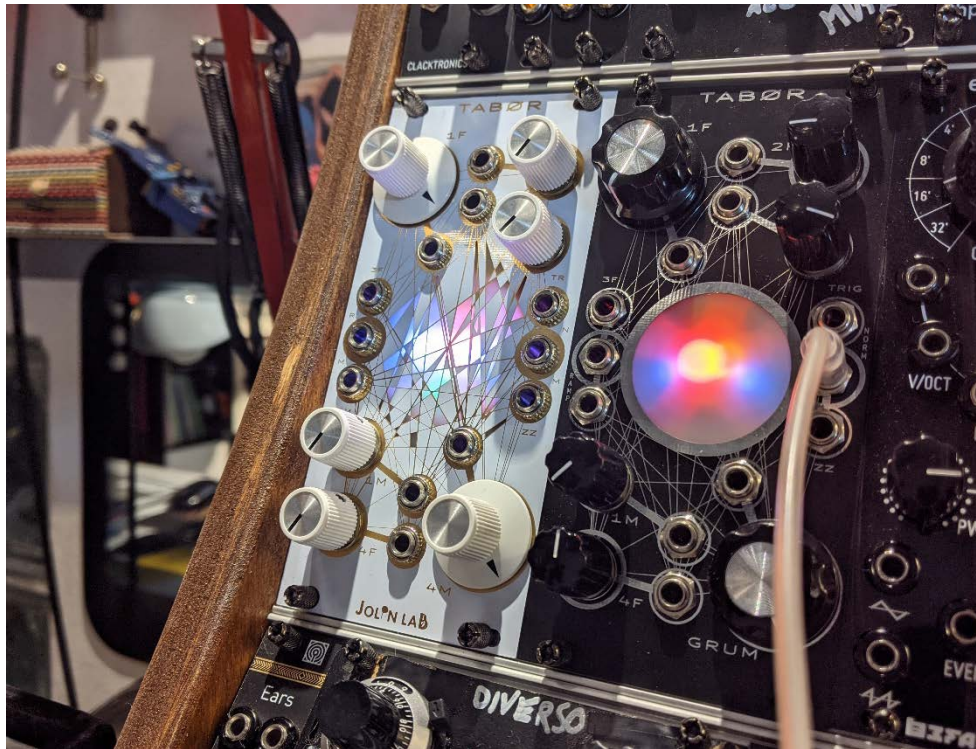
tip: we are soldering them now to ensure that all the surface components are aligned with the panel.

Before powering it up:

- Check the power header for shorts with the multimeter.
tip: follow [this tutorial](#)² on that by SynthDiyGuy if you have any doubts.
- Mind the polarity on the header socket of your PSU, **remember that red line is -12v**

How to check if the module is doing its things properly?

- Play a bit with the knobs until you are sure that all the 7 LEDs light up correctly
- Blue LEDs are on regardless of the RM input
- All the three outputs are working (play with the knobs if the TR out is silent)



done! enjoy your newborn

TABØR

find us:

web ⇒ www.jolinlab.com

e-mail ⇒ jolinlab@gmail.com

Instagram ⇒ [@jolinlab](https://www.instagram.com/jolinlab)

² <https://www.youtube.com/watch?v=qS0SoliiQCo>